



SUN DESIGN GROUP

Add: 11220 Grader st #130 Dallas Tx 75238

Tel: +1 (470) 461 7492 / +86 138 2234 0936

Whatsapp: +86 138 2234 0936

Email: info@sg-storeline.com <https://www.sg-storeline.com/>

Manufacturer: **SUN DESIGN HARDWARE** <https://www.sd-plus.com/>



SUN DESIGN GROUP

Designer Frameless Glass Shower, Balustrading, Pool Fencing & Doors



SUN DESIGN GROUP is a subsidiary of **SUN DESIGN HARDWARE** based in Dallas, Texas, USA. We are expanding our operations to Los Angeles, New York, and Texas while also increasing our storage capacity. Our team at **SUN DESIGN GROUP** specializes in manufacturing and supplying shower hardware, building hardware, and glass accessories. Each product we create guarantees exceptional performance as we are dedicated to providing the highest quality and most durable products with an emphasis on easy installation for your satisfaction. Quality and continuous improvement are paramount to us as we prioritize the excellence of our work and the contentment of our customers. We firmly believe in prioritizing function over appearance.

Adhering to the principles of "integrity" and "professionalism," **SUN DESIGN GROUP** boasts a high-quality technical management team, a strong production team, and an impeccable after-sales service system. Our production capacity, innovation ability, and management level have reached first-class standards. Through prompt responses, excellent customer service, competitive prices, and reliability; we deliver truly unique value to our customers. Additionally, we constantly monitor market trends to ensure that we offer products that best meet our customers' needs.

Gemma Series Door Hinges

Frameless Shower Door Hinges

- For 3/8" to 1/2" Tempered Glass
- Industry Standard Square Body Profile 3-1/2" Tall
- Eight Popular Finishes
- Self-Centering Within 15 Degrees of Closing Position
- For Use in Residential Bath and Commercial Hotel Applications
- Reversible 5 Degree Pivot Pin that Doesn't Require Special Tools
- High Quality Solid Brass Construction With State-of-the-Art Plating Process
- Display size: **91×56mm**

Available Finishes



Glass-to-Wall Hinges for 3/8" to 1/2" Glass



GEM56TXX
Full Plate
Wall to Glass 90°



GEM56TSXX
Short Plate
Wall to Glass 90°



GEM56LXX
Offset Plate
Wall to Glass 90°



GEM56HXX
H Plate
Wall to Glass 90°

Glass-to-Glass for 3/8" to 1/2" Glass



GEM90XX
Glass to Glass 90°



GEM135XX
Glass to Glass 135°



GEM180XX
Glass to Glass 180°

*XX=FINISH



Add: 11220 Grader st #130 Dallas Tx 75238
Tel: +1 (470) 461 7492 / +86 138 2234 0936
Email: info@sg-storeline.com
Whatsapp: +86 138 2234 0936
<https://www.sg-storeline.com/>

Adjustable Gemma Series Door Hinges

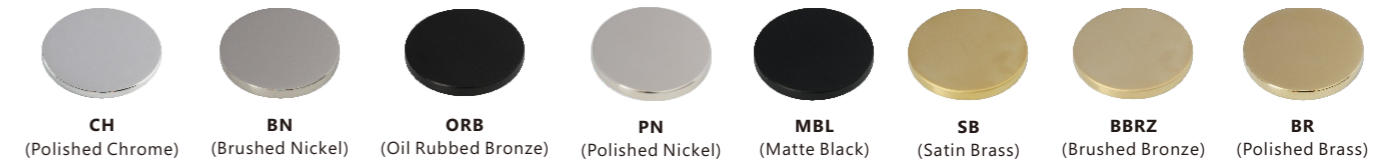
Frameless Shower Door Hinges

- For 3/8" to 1/2" Tempered Glass
- Industry Standard Square Body Profile 3-1/2" Tall
- Eight Popular Finishes
- Self-Centering Within 15 Degrees of Closing Position
- For Use in Residential Bath and Commercial Hotel Applications
- Reversible 5 Degree Pivot Pin that Doesn't Require Special Tools
- High Quality Solid Brass Construction With State-of-the-Art Plating Process
- Display size: **91×56mm**



Adjustable Allen
Set Screws
(Backside of Hinge)

Available Finishes



Glass-to-Wall Hinges for 3/8" to 1/2" Glass



GEMA10TXX
Full Plate
Wall to Glass 90°



GEMA10LXX
Offset Plate
Wall to Glass 90°



GEMA10HXX
H Plate
Wall to Glass 90°

Glass-to-Glass for 3/8" to 1/2" Glass



GEMA135XX
Glass to Glass 135°



GEMA180XX
Glass to Glass 180°

*XX=FINISH



Add: 11220 Grader st #130 Dallas Tx 75238
Tel: +1 (470) 461 7492 / +86 138 2234 0936
Email: info@sg-storeline.com
Whatsapp: +86 138 2234 0936
<https://www.sg-storeline.com/>

Pennie Series Door Hinges

Frameless Shower Door Hinges

- For 3/8" to 1/2" Tempered Glass
- Industry Standard Square Body Profile 3-1/2" Tall
- Eight Popular Finishes
- Self-Centering Within 15 Degrees of Closing Position
- For Use in Residential Bath and Commercial Hotel Applications
- Reversible 5 Degree Pivot Pin that Doesn't Require Special Tools
- High Quality Solid Brass Construction With State-of-the-Art Plating Process
- Display size: **91x56mm**

Available Finishes



Glass-to-Wall Hinges for 3/8" to 1/2" Glass

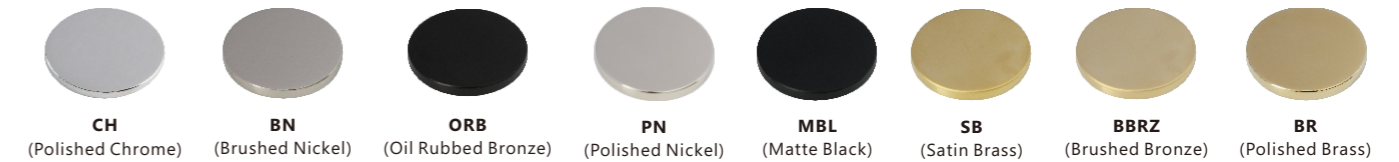


Veronica Series Door Hinges

Frameless Shower Door Hinges

- For 3/8" to 1/2" Tempered Glass
- Industry Standard Square Body Profile 3-15/16" Tall
- Eight Popular Finishes
- Self-Centering Within 15 Degrees of Closing Position
- For Use in Residential Bath and Commercial Hotel Applications
- Reversible 5 Degree Pivot Pin that Doesn't Require Special Tools
- High Quality Solid Brass Construction With State-of-the-Art Plating Process
- Display size: **101x58mm**

Available Finishes



Glass-to-Wall Hinges for 3/8" to 1/2" Glass



Glass-to-Glass for 3/8" to 1/2" Glass



Glass-to-Glass for 3/8" to 1/2" Glass



*XX=FINISH

*XX=FINISH



Add: 11220 Grader st #130 Dallas Tx 75238
 Tel: +1 (470) 461 7492 / +86 138 2234 0936 Whatsapp: +86 138 2234 0936
 Email: info@sg-storeline.com <https://www.sg-storeline.com/>

Add: 11220 Grader st #130 Dallas Tx 75238
 Tel: +1 (470) 461 7492 / +86 138 2234 0936 Whatsapp: +86 138 2234 0936
 Email: info@sg-storeline.com <https://www.sg-storeline.com/>



Adjustable Veronica Series Door Hinges

Frameless Shower Door Hinges

- For 3/8" to 1/2" Tempered Glass
- Industry Standard Square Body Profile 3-15/16" Tall
- Eight Popular Finishes
- Self-Centering Within 15 Degrees of Closing Position
- For Use in Residential Bath and Commercial Hotel Applications
- Reversible 5 Degree Pivot Pin that Doesn't Require Special Tools
- High Quality Solid Brass Construction With State-of-the-Art Plating Process
- Display size: **101×58mm**



Adjustable Allen Set Screws (Backside of Hinge)

Available Finishes



Glass-to-Wall Hinges for 3/8" to 1/2" Glass



VER10ATXX
Full Plate
Wall to Glass 90°

VER10ALXX
Offset Plate
Wall to Glass 90°

VER10AHXX
H Plate
Wall to Glass 90°

Glass-to-Glass for 3/8" to 1/2" Glass



VER135AXX
Glass to Glass 135°

VER180AXX
Glass to Glass 180°

*XX=FINISH



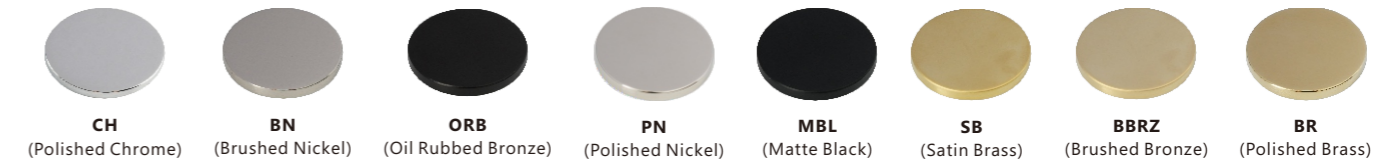
Add: 11220 Grader st #130 Dallas Tx 75238
Tel: +1 (470) 461 7492 / +86 138 2234 0936
Email: info@sg-storeline.com
Whatsapp: +86 138 2234 0936
<https://www.sg-storeline.com/>

Corna Door Hinges

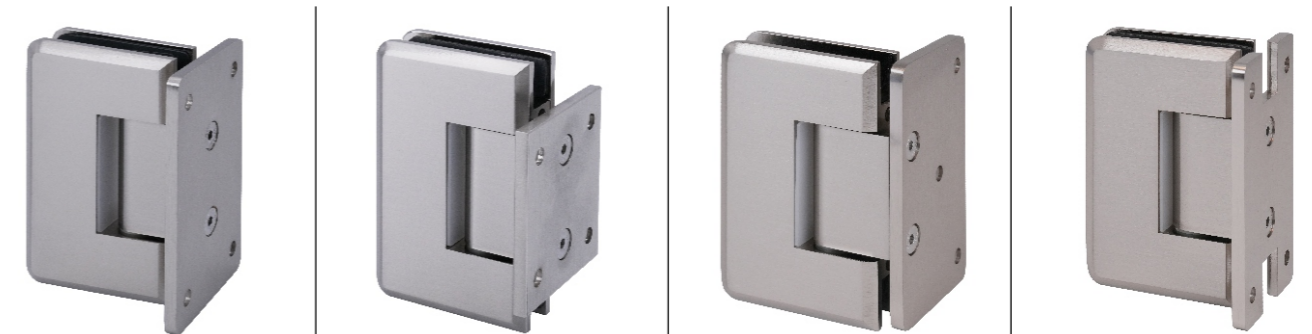
Frameless Shower Door Hinges

- For 3/8" to 1/2" Tempered Glass
- Industry Standard Square Body Profile 3-15/16" Tall
- Eight Popular Finishes
- Self-Centering Within 15 Degrees of Closing Position
- For Use in Residential Bath and Commercial Hotel Applications
- Reversible 5 Degree Pivot Pin that Doesn't Require Special Tools
- High Quality Solid Brass Construction With State-of-the-Art Plating Process
- Display size: **101×58mm**

Available Finishes



Glass-to-Wall Hinges for 3/8" to 1/2" Glass



COR12TXX
Full Plate
Wall to Glass 90°

COR12TSXX
Short Plate
Wall to Glass 90°

COR12LXX
Offset Plate
Wall to Glass 90°

COR12HXX
H Plate
Wall to Glass 90°

Glass-to-Glass for 3/8" to 1/2" Glass



COR135XX
Glass to Glass 135°

COR180XX
Glass to Glass 180°

*XX=FINISH



Add: 11220 Grader st #130 Dallas Tx 75238
Tel: +1 (470) 461 7492 / +86 138 2234 0936
Email: info@sg-storeline.com
Whatsapp: +86 138 2234 0936
<https://www.sg-storeline.com/>

Catalina Series Door Hinges

Frameless Shower Door Pivot Hinges



CAT1XX



CAT1LXX



CAT1RXX



CAT180XX



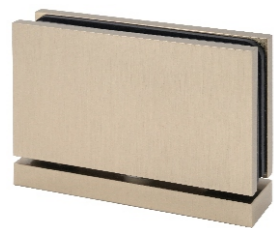
CAT135LXX
CAT135RXX



CAT2XX

Senior Catalina Series Door Hinges

Frameless Shower Door Pivot Hinges



SCAT1XX



SCAT180XX



SCAT2XX

*XX=FINISH



Add: 11220 Grader st #130 Dallas Tx 75238
Tel: +1 (470) 461 7492 / +86 138 2234 0936 Whatsapp: +86 138 2234 0936
Email: info@sg-storeline.com <https://www.sg-storeline.com/>

Kara Series Door Hinges

Frameless Shower Door Pivot Hinges



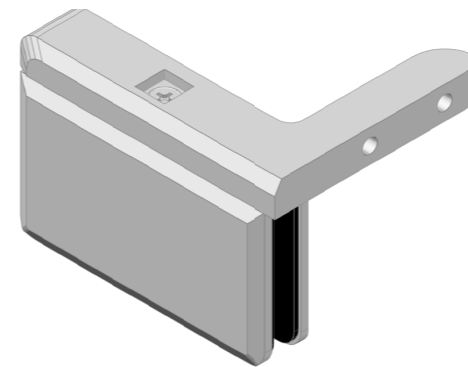
KPH1XX



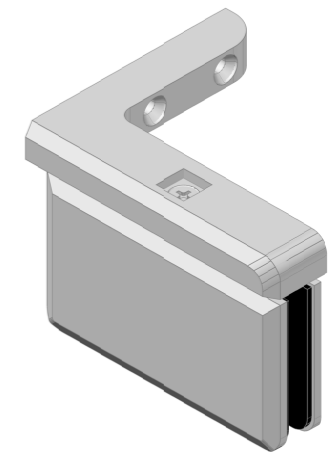
KPH2XX



KPH180XX



KPH1LXX



KPH1RXX

Senior Kara Series Door Hinges

Frameless Shower Door Pivot Hinges



SKPH1XX



SKPH2XX



SKPH180XX

*XX=FINISH



Add: 11220 Grader st #130 Dallas Tx 75238
Tel: +1 (470) 461 7492 / +86 138 2234 0936 Whatsapp: +86 138 2234 0936
Email: info@sg-storeline.com <https://www.sg-storeline.com/>

Vania Series Door Hinges

Installation Instructions

- There is a pair of hinges in each box, they are not identical and each has its specific position.
- One hinge is Hydraulic and should be placed as the bottom hinge, with the adjustment screws facing up. The other hinge needs to be placed in the top position.
- Select the correct packers depending on thickness of glass.
- Do not make any adjustments to the hydraulic hinge prior to installing them on the door. They are intentionally loose to ease installation.
- Fix the hinges to the door first.
- Place packers under the door, centre the door in the opening and fix hinge to the sidelight or jamb.
- Once fixed in position, open the door and adjust tension for correct closing force.

Available Finishes



Glass-to-Wall Hinges for 5/16" to 9/16" Glass

VS11575TXX
Full Plate
Wall to Glass 90°



VS11575XX
Glass to Glass 180°



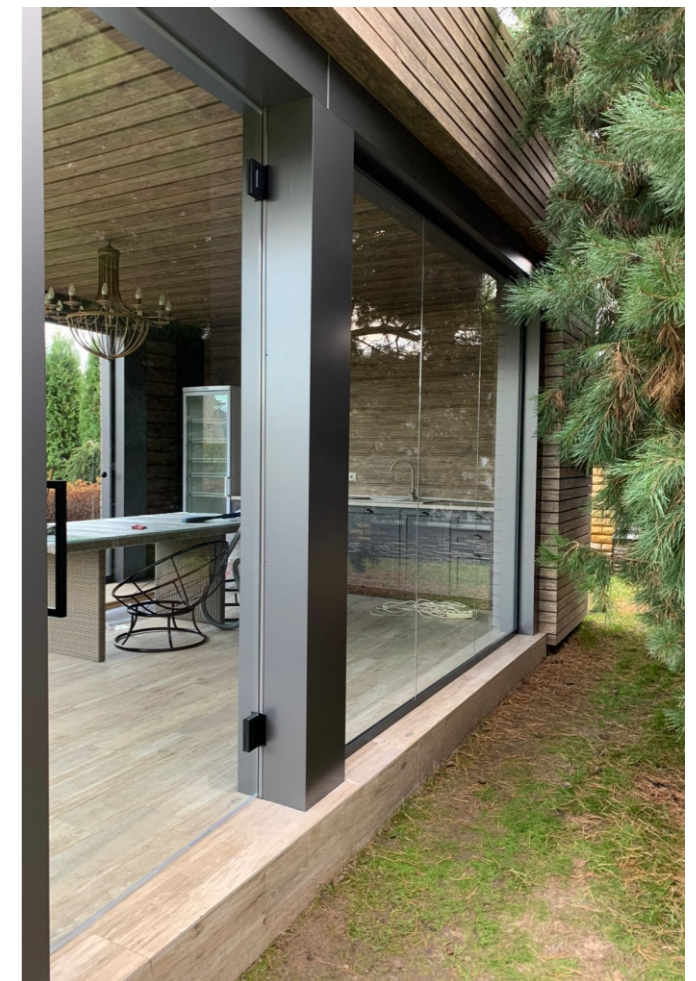
V11575TXX
Full Plate
Wall to Glass 90°
with cover



V11575XX
Glass to Glass 180°
with cover



*XX=FINISH



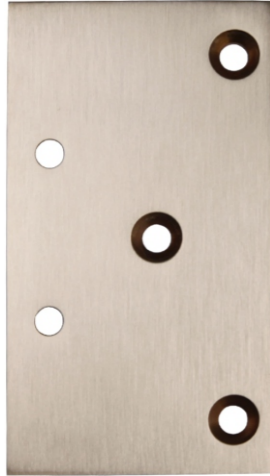
Add: 11220 Grader st #130 Dallas Tx 75238
 Tel: +1 (470) 461 7492 / +86 138 2234 0936 Whatsapp: +86 138 2234 0936
 Email: info@sg-storeline.com <https://www.sg-storeline.com/>

Shower Hinge Replacement Parts

Gemma Series
Full Back Plate



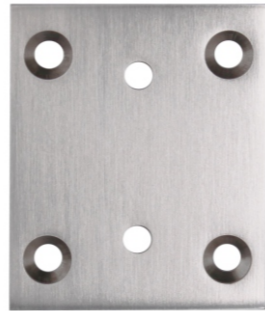
Gemma Series
Offset Back Plate



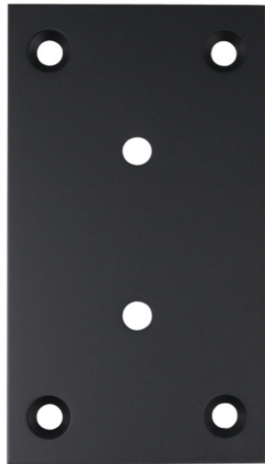
Gemma Series
"H" Back Plate



Gemma Series
Short Back Plate



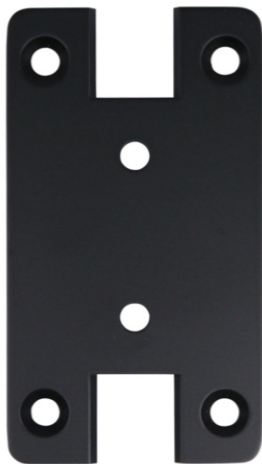
Veronica Series
Full Back Plate



Veronica Series
Offset Back Plate



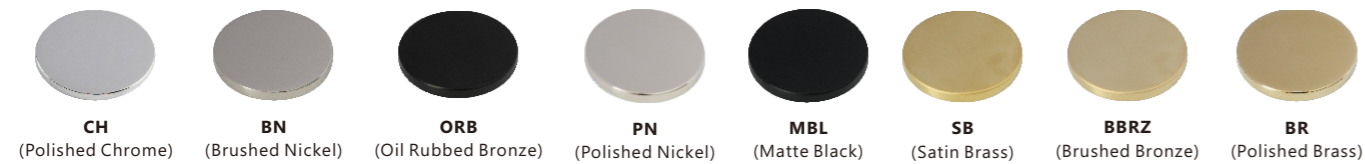
Corna Series
"H" Back Plate



Veronica Series
Short Back Plate



Available Finishes



*XX=FINISH

Shower Hinge Replacement Parts

6 mm x 14 mm Hinge
Cover Plate Screws

- 6 mm x 14 mm Long
- Available in Four Standard Finishes
- For Gemma, Pennie, Kara, Catalina Hinges
- 8 Per Pack



Allen Head



Phillips Head

ALLEN HEAD ITEM NO.	PHILLIPS HEAD ITEM NO.	FINISH
AH6X14CH	PH6X14CH	Polished Chrome
AH6X14BN	PH6X14BN	Brushed Nickel
AH6X14ORB	PH6X14ORB	Oil Rubbed Bronze
AH6X14MB	PH6X14MB	Matte Black
AH6X14PN	PH6X14PN	Polished Nickel
AH6X14SB	PH6X14SB	Satin Brass
AH6X14BBRZ	PH6X14BBRZ	Brushed Bronze

Minimum order: 1 pack.

6 mm x 16 mm Hinge
Cover Plate Screws

- 6 mm x 16 mm Long
- Available in Four Standard Finishes
- For Veronica, Coma, Kara, Catalina Hinges
- 8 Per Pack



Allen Head



Phillips Head

ALLEN HEAD ITEM NO.	PHILLIPS HEAD ITEM NO.	FINISH
AH6X16CH	PH6X16CH	Polished Chrome
AH6X16BN	PH6X16BN	Brushed Nickel
AH6X16ORB	PH6X16ORB	Oil Rubbed Bronze
AH6X16MB	PH6X16MB	Matte Black
AH6X16PN	PH6X16PN	Polished Nickel
AH6X16SB	PH6X16SB	Satin Brass
AH6X16BBRZ	PH6X16BBRZ	Brushed Bronze

Minimum order: 1 pack.

#10 x 2" Wall Mount
Backplate Flat Head
Phillips Screws

- Heavy-Duty 304 Grade Stainless Steel Construction
- For Mounting Glass-to-Wall Hinges and Our SUC4/BUC4 Clamps
- 10 Screws Per Pack



ITEM NO.	FINISH
PH102CH	Polished Chrome
PH102BN	Brushed Nickel
PH102ORB	Oil Rubbed Bronze
PH102MB	Matte Black
PH102PN	Polished Nickel
PH102SB	Satin Brass
PH102BBRZ	Brushed Bronze

Minimum order: 1 pack.

#10 x 3" Wall Mount
Backplate Flat Head
Phillips Screws

- Heavy-Duty 304 Grade Stainless Steel Construction
- For Mounting Glass-to-Wall Hinges and Our SUC4/BUC4 Clamps
- 10 Screws Per Pack



ITEM NO.	FINISH
PH103CH	Polished Chrome
PH103BN	Brushed Nickel
PH103ORB	Oil Rubbed Bronze
PH103MB	Matte Black
PH103PN	Polished Nickel
PH103SB	Satin Brass
PH103BBRZ	Brushed Bronze

Minimum order: 1 pack.

5 Degree Pivot Pins

- Easy to Install
- Alters Door to Press Snugly Against Jamb
- Two Pivot Pins Per Set



ITEM NO.	DESCRIPTION	GLASS SIZE
SGRP1VPN	Pivot Pin	3/8" (10 mm)
SGRP1VBN	Pivot Pin	1/2" (12 mm)

Minimum order: 1 set.



Add: 11220 Grader st #130 Dallas Tx 75238
Tel: +1 (470) 461 7492 / +86 138 2234 0936
Email: info@sg-storeline.com
Whatsapp: +86 138 2234 0936
<https://www.sg-storeline.com/>



Add: 11220 Grader st #130 Dallas Tx 75238
Tel: +1 (470) 461 7492 / +86 138 2234 0936
Email: info@sg-storeline.com
Whatsapp: +86 138 2234 0936
<https://www.sg-storeline.com/>

*XX=FINISH



Sliding Shower Door System



Clara Series Sliding Shower Door System

The circular shaped header and the round rollers of the Clara Series Sliding Door System are the perfect complement to each other. The use of minimal hardware lends itself to the popular modern sliding shower door systems by showing more glass, and less hardware. The high quality rollers ensure quiet door travel, and make the door easy to slide. The Clara Series Sliding System accommodates 1/2" or 3/8" (12 or 10 mm) thick tempered safety glass (not included), and the system allows that the fixed and sliding panels are reversible for installation as desired. The Clara Series Sliding Door System is available in a choice of polished stainless steel, brushed stainless steel, or matte black finish.



CLARA
Roller
Total Four Included in Kit



CLAF A
Fixed Panel Fitting
Set of Two per Package

Cat. No. CLA78 Standard 180 Degree Kit Includes

- One - 78" (1981 mm) Length "I Beam" Header Bar
- Four - Rollers
- One - Stopper
- Two - Wall Mount Fittings
- Two - Track Holder Fittings for Fixed Panel
- One - Bottom Guide
- Two - 40" (1016 mm) Bottom Sweep with Drip Rail
- One - 80" (2032 mm) Clear L-Jamb



CLAW A
Track Holder Fitting
Set of Two per Package



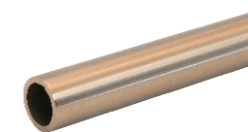
CLAG A
Track Holder Fitting



CLAS A
Stopper



CLAG A1
Bottom Door Guide



CLAH A
Header Support Bar
(Drilled with Grommet inserts at holes)



PSP312712
Bottom Sweep
for 1/2" (12 mm) Glass



PSP312710
Bottom Sweep
for 3/8" (10 mm) Glass



PSD1412
L-Seal

Available Finishes



CH
(Polished Chrome)



BN
(Brushed Nickel)



ORB
(Oil Rubbed Bronze)



PN
(Polished Nickel)



MBL
(Matte Black)



SB
(Satin Brass)



BBRZ
(Brushed Bronze)



BR
(Polished Brass)

*XX=FINISH





Sliding Shower Door System



Casslus Series Sliding Shower Door System

The Casslus Series Two Door Bypass Sliding Shower Door System utilizes a modern top roller system that features four rollers on each door for ease of sliding. This quiet, smooth sliding system is made of high quality stainless steel, thus ensuring easy opening and closing of the doors. The Casslus Series is versatile in design, able to adapt to full standing showers or above bathtubs. The Casslus Series Bypass Sliding Shower Door System accommodates 3/8" or 5/16" (10 or 8 mm) thick tempered safety glass (not included). Offered in polished or brushed stainless steel matte black finish.



CASRA
Roller
Eight Included in Kit

Cat. No. CAS73 Standard 180 Degree Kit Includes

- One - 73" (1854 mm) Length of Header Bar
- Eight - Rollers
- Two - Stoppers
- Two - Track Holder Fittings for the Wall
- One - Bottom Guide
- Two - 40" (1016 mm) Bottom Sweeps With Drip Rail
- Two - 80" (2032 mm) Clear L-Jamb
- Two - 24" (610 mm) Single-Sided Towel Bars
- One - Tool Kit



CASGA
Track Holder Fitting



CASWA
Track Holder Fitting
(Two Included)



CASSA
Stopper



CASGA1
Bottom Guide



CASHA
Header Support Bar



TBNW24
Single-Sided Tower Bar
(Two Included)



PSP312710
Bottom Sweep
(Two Included)



PSPA1412
L-Seal

Available Finishes



CH
(Polished Chrome)



BN
(Brushed Nickel)



ORB
(Oil Rubbed Bronze)



PN
(Polished Nickel)



MBL
(Matte Black)



SB
(Satin Brass)



BBRZ
(Brushed Bronze)



BR
(Polished Brass)

*XX=FINISH





Sliding Shower Door System



Selena Series Sliding Shower Door System

Our Selena Series Sliding Shower Door System is unique from traditional sliding shower doors. The use of minimal hardware provides a frameless look that gives the enclosure floating appearance. Specially designed roller bearings allow for quiet and easy opening and closing of the door. This unique roller system operates above and below the header bar that spans the top of the enclosure. One sliding and one fixed panel make the 180 Degree Standard Kit beautiful and practical. Units will work with 3/8" or 5/16" (10 or 8 mm) thick tempered glass (not included).



SELNRA
Roller
Four Included in Kit

Cat. No. SEL78 Standard 180 Degree Kit Includes

- One - 78-3/4" (2 m) or 95" (2.41 m) Length Header Bar
- Four - Rollers
- One - Stopper
- Two - Track Holder Fittings for Wall
- Two - Track Holder Fittings for Fixed Panel
- One - Thru-Glass Pull
- One - Door Guide
- One - 95" (2.41 m) Clear L-Seal



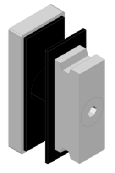
SELFPA
Track Holder Fitting
(Two Included)



SELNHPA
Sliding Handle



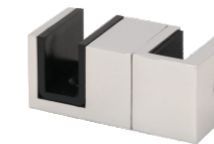
SELAHWA
Track Holder Fitting
(Two Included)



SEL90
Track Holder Fitting



SELNDSA
Stopper



SELUGA
Bottom Guide



SELHA
Header Support Bar



PSP1412
L-Seal

Available Finishes



CH
(Polished Chrome)



BN
(Brushed Nickel)



ORB
(Oil Rubbed Bronze)



PN
(Polished Nickel)



MBL
(Matte Black)



SB
(Satin Brass)



BBRZ
(Brushed Bronze)



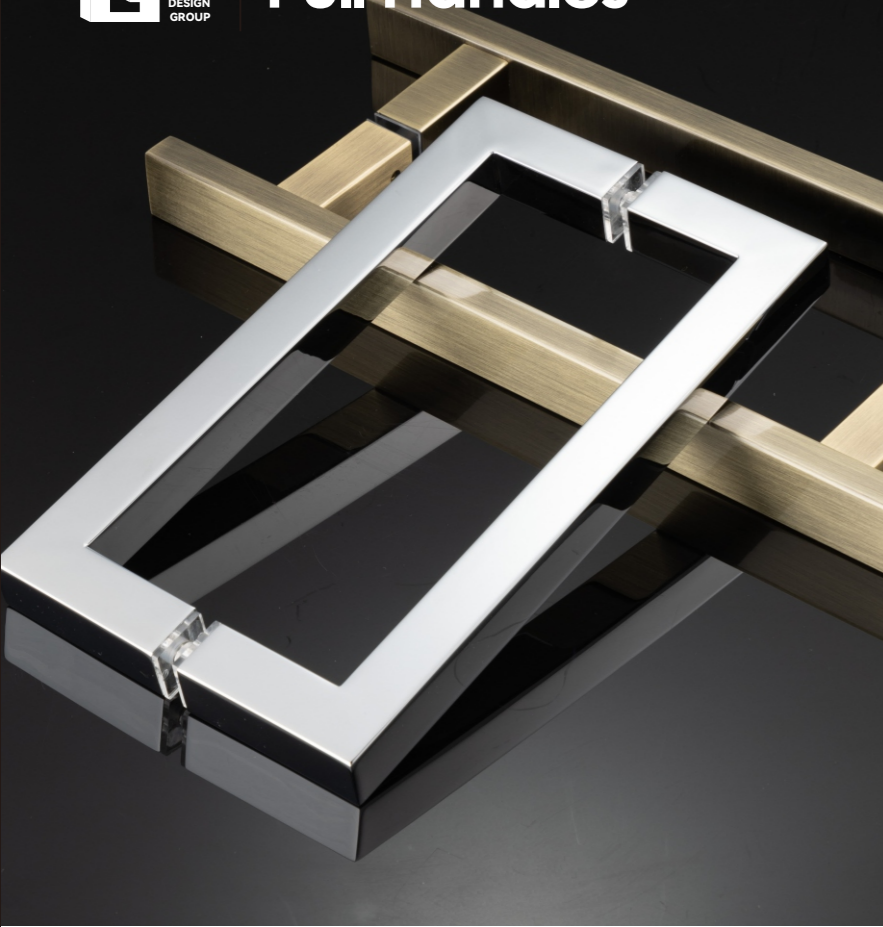
BR
(Polished Brass)

*XX=FINISH



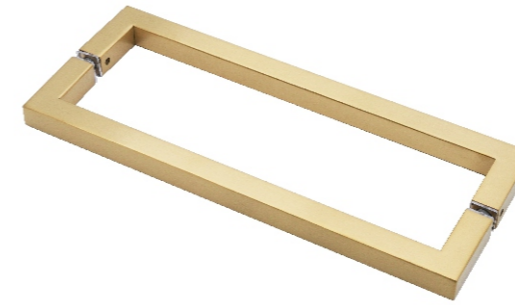


Pull Handles

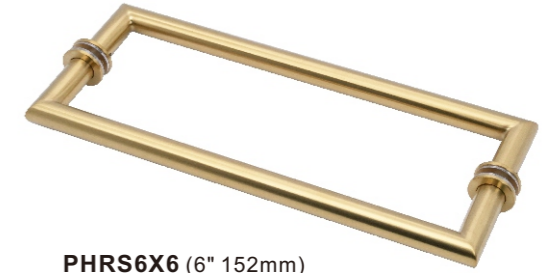


We offer a wide range of Pull Handles and Accessories for frameless shower door enclosures to add a unique look and feel to any bathroom space. Models are available single-sided or back-to-back mount, with or without designer metal washers in all the most popular architectural finishes. Our professional grade materials and workmanship assure you that the finished product will last for many years after your project is complete.

Pull Handles



PHS6X6 (6" 152mm)
PHS8X8 (8" 203mm)
PHS18X18 (18" 457mm)
PHS24X24 (24" 609mm)
PHS36X36 (36" 914mm)
PHS48X48 (48" 1219mm)



PHRS6X6 (6" 152mm)
PHRS8X8 (8" 203mm)
PHRS18X18 (18" 457mm)
PHRS24X24 (24" 609mm)
PHRS36X36 (36" 914mm)
PHRS48X48 (48" 1219mm)



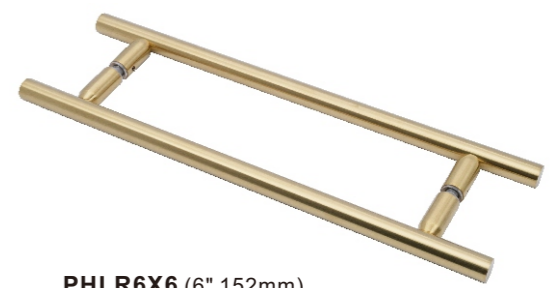
PHR6X6 (6" 152mm)
PHR8X8 (8" 203mm)
PHR18X18 (18" 457mm)
PHR24X24 (24" 609mm)
PHR36X36 (36" 914mm)
PHR48X48 (48" 1219mm)



PHRNW6X6 (6" 152mm)
PHRNW8X8 (8" 203mm)
PHRNW18X18 (18" 457mm)
PHRNW24X24 (24" 609mm)
PHRNW36X36 (36" 914mm)
PHRNW48X48 (48" 1219mm)



PHLS6X6 (6" 152mm)
PHLS8X8 (8" 203mm)
PHLS18X18 (18" 457mm)
PHLS24X24 (24" 609mm)
PHLS36X36 (36" 914mm)
PHLS48X48 (48" 1219mm)



PHLR6X6 (6" 152mm)
PHLR8X8 (8" 203mm)
PHLR18X18 (18" 457mm)
PHLR24X24 (24" 609mm)
PHLR36X36 (36" 914mm)
PHLR48X48 (48" 1219mm)

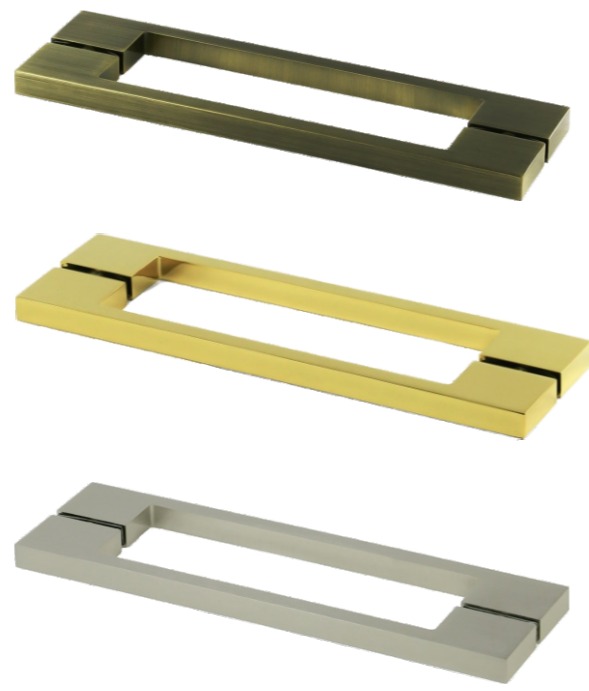


*XX=FINISH





Pull Handles



Pull Handles Replacement Parts



RSK
Round Washer/Stud
Replacement Set



RNWSK
Round Stud
Replacement Set



SSK
Square Washer/Stud
Replacement Set



RWSK
Round Replacement Washer/
Stud Kit for Single-Sided
Solid Pull Handle



RWTSK
Replacement Washer/
Stud Set for Shower
Handles/Towel Bars



RWTSK1
Replacement Washer/
Stud Set for Shower
Handles/Towel Bars



SWTSK
Replacement Washer/
Shower Handles/
Towel Bars



SKM10
Pull Set
Screws - Pack of 10



RPSK126
Clear 1/2" Outside
Diameter Replacement
Macaroni for 3/4" Standoffs



RPWSK19
3/4" Diameter Clear
Vinyl Replacement
Washer



RPWSK32
1-1/4" Diameter Clear
Replacement Gasket

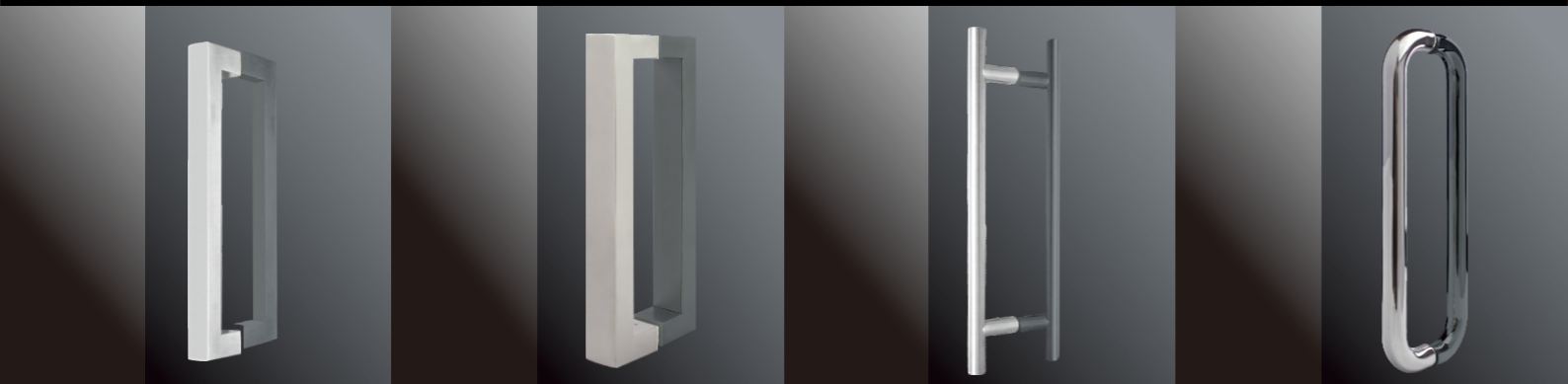


RPSWSK
Replacement Washers
for Back-to-Back
Pull Handle

Pull Handles Specifications

Material	SUS 304
Glass Thickness Range	1/2", 3/8", 5/16", or 1/4" (12, 10, 8, or 6 mm)
Hole Diameter Required	1/2" (12 mm) or 5/8" (16 mm)
Center-to-Center Hole Spacing	Varies

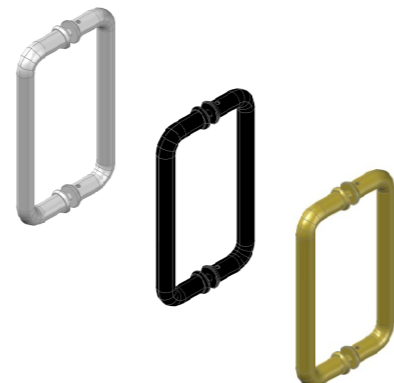
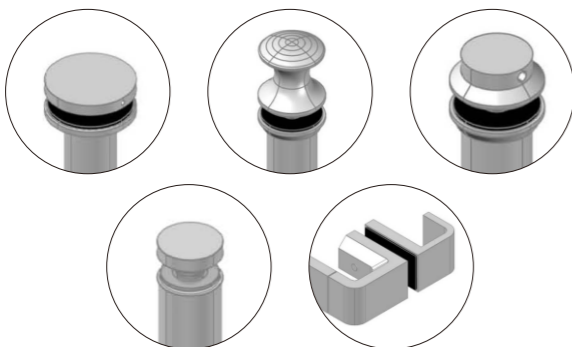
Available Finishes



*XX=FINISH

Add: 11220 Grader st #130 Dallas Tx 75238
 Tel: +1 (470) 461 7492 / +86 138 2234 0936 Whatsapp: +86 138 2234 0936
 Email: info@sg-storeline.com <https://www.sg-storeline.com/>





Towel Bars

Single-Sided Towel Bar



TBR12 (12" 304mm)
TBR18 (18" 457mm)
TBR20 (20" 508mm)
TBR24 (24" 609mm)
TBR28 (28" 711mm)



TBRNW12 (12" 304mm)
TBRNW18 (18" 457mm)
TBRNW20 (20" 508mm)
TBRNW24 (24" 609mm)
TBRNW28 (28" 711mm)



TBRS12 (12" 304mm)
TBRS18 (18" 457mm)
TBRS20 (20" 508mm)
TBRS24 (24" 609mm)
TBRS28 (28" 711mm)



TBRSNW12 (12" 304mm)
TBRSNW18 (18" 457mm)
TBRSNW20 (20" 508mm)
TBRSNW24 (24" 609mm)
TBRSNW28 (28" 711mm)



TBLR12 (12" 304mm)
TBLR18 (18" 457mm)
TBLR20 (20" 508mm)
TBLR24 (24" 609mm)
TBLR28 (28" 711mm)



TBS12 (12" 304mm)
TBS18 (18" 457mm)
TBS20 (20" 508mm)
TBS24 (24" 609mm)
TBS28 (28" 711mm)

*XX=FINISH



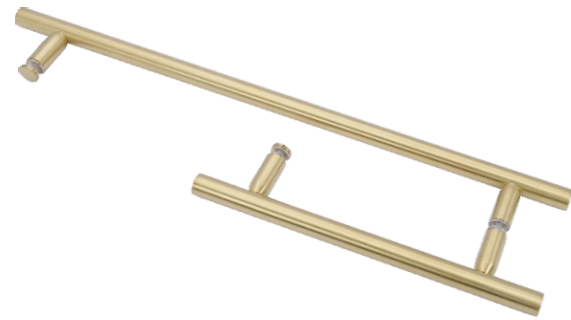
Handle / Towel Bars Combinations



TBR6x18
TBR6x24
TBR8x18
TBR8x24



TBS6x18
TBS6x24
TBS8x18
TBS8x24

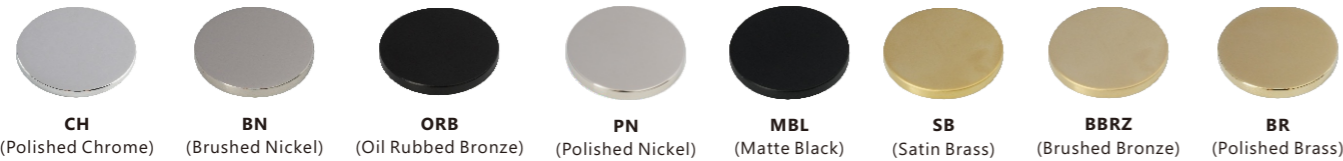


TBLR6x18
TBLR6x24
TBLR8x18
TBLR8x24



TBRS6x18
TBRS6x24
TBRS8x18
TBRS8x24

Available Finishes



CH (Polished Chrome) BN (Brushed Nickel) ORB (Oil Rubbed Bronze) PN (Polished Nickel) MBL (Matte Black) SB (Satin Brass) BBRZ (Brushed Bronze) BR (Polished Brass)

*XX=FINISH



Add: 11220 Grader st #130 Dallas Tx 75238
Tel: +1 (470) 461 7492 / +86 138 2234 0936 Whatsapp: +86 138 2234 0936
Email: info@sg-storeline.com <https://www.sg-storeline.com/>



Knobs



DPKS2525
Back to Back Knob



DPKS25
Single Sided Knob



DPKR2630
Back to Back Knob



DPKR26
Single Sided Knob



DPKR25
Single Sided Knob



DPKR2532
Back to Back Knob



DPKR40
Single Sided Knob



DPKR4026
Back to Back Knob



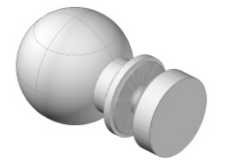
DPKR2630A
Back to Back Knob



DPKR26A
Single Sided Knob



DPKR3040
Back to Back Knob



DPKR3040
Back to Back Knob



DPKR19
Single Sided Knob



DPKR1932
Back to Back Knob



DPKR19P
Single Sided Knob



DPKR1932P
Back to Back Knob

Available Finishes



CH
(Polished Chrome)



BN
(Brushed Nickel)



ORB
(Oil Rubbed Bronze)



PN
(Polished Nickel)



MBL
(Matte Black)



SB
(Satin Brass)



BBRZ
(Brushed Bronze)

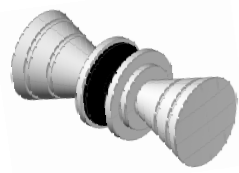


BR
(Polished Brass)

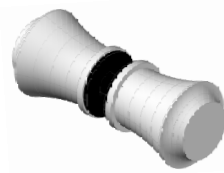
*XX=FINISH



Knobs



DPKR3540
Back to Back Knob



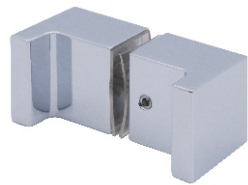
DPKR3027
Back to Back Knob



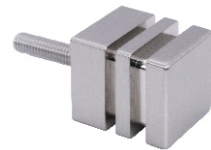
DPKR3843
Back to Back Knob



DPKR19M
Single Sided Knob



DPKS3030
Back to Back Knob



DPKS19S
For Mounting on Single-Sided SGSQ Towel Bars



DPK2470
Back to Back Knob



DPKR3030B
Back to Back Knob



DPKR3030A
Back to Back Knob

Available Finishes



CH (Polished Chrome) **BN** (Brushed Nickel) **ORB** (Oil Rubbed Bronze) **PN** (Polished Nickel) **MBL** (Matte Black) **SB** (Satin Brass) **BBRZ** (Brushed Bronze) **BR** (Polished Brass)

*XX=FINISH



Add: 11220 Grader st #130 Dallas Tx 75238
Tel: +1 (470) 461 7492 / +86 138 2234 0936 **Whatsapp:** +86 138 2234 0936
Email: info@sg-storeline.com <https://www.sg-storeline.com/>

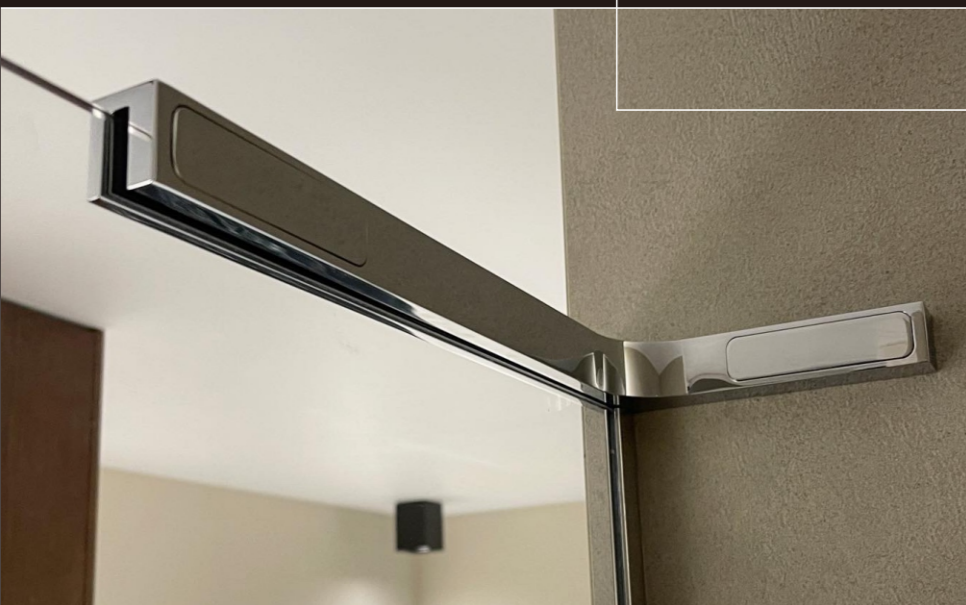


Add: 11220 Grader st #130 Dallas Tx 75238
Tel: +1 (470) 461 7492 / +86 138 2234 0936 **Whatsapp:** +86 138 2234 0936
Email: info@sg-storeline.com <https://www.sg-storeline.com/>



Brackets

It's the quality of the product that determines sales.



Square Profile Glass Clamps



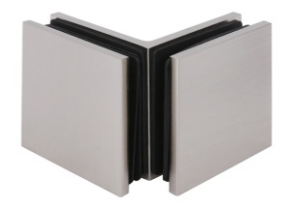
SGC01
Wall Mount Clamp
(Hole In Glass)



SGC90W
Fixed Panel Clamp
(With Large Leg)



SGC90WS
Fixed Panel Clamp
(With Small Leg)



SGC90G
90° Glass to Glass
(Open Face)



SGC135
135° Glass to Glass



SGC181
180° Glass to Glass



SGC182
180° Glass to Glass
(Movable crossbeam)



SGC180
180° Glass to Glass



SGC90G1
90° Glass to Glass



SGC135G1
135° Glass to Glass



SGC90T
90° Glass to Glass
(T Junction)

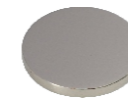


SGC183
180° Glass to Wall

Available Finishes



CH
(Polished Chrome)



BN
(Brushed Nickel)



ORB
(Oil Rubbed Bronze)



PN
(Polished Nickel)



MBL
(Matte Black)



SB
(Satin Brass)



BBRZ
(Brushed Bronze)



BR
(Polished Brass)

*XX=FINISH



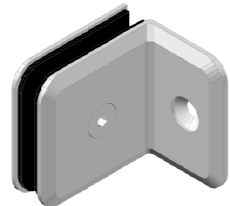
Beveled Profile Glass Clamps



BGC01
Wall Mount Clamp
(Hole In Glass)



BGC90W
Fixed Panel Clamp
(With Large Leg)



BGC90WS
Fixed Panel Clamp
(With Small Leg)



BGC90G
90° Glass to Glass
(Open Face)



BGC135
135° Glass to Glass



BGC181
180° Glass to Glass



BGC182
180° Glass to Glass
(Movable crossbeam)



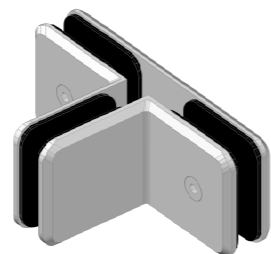
BGC180
180° Glass to Glass



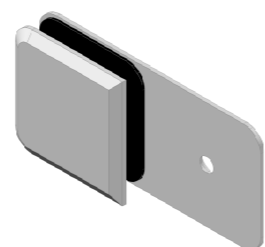
BGC90G1
90° Glass to Glass



BGC135G1
135° Glass to Glass



BGC90T
90° Glass to Glass
(T Junction)



BGC183
180° Glass to Wall

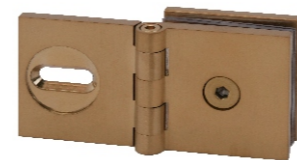
Available Finishes



CH (Polished Chrome) **BN** (Brushed Nickel) **ORB** (Oil Rubbed Bronze) **PN** (Polished Nickel) **MBL** (Matte Black) **SB** (Satin Brass) **BBRZ** (Brushed Bronze) **BR** (Polished Brass)

*XX=FINISH

Adjustable Glass Clamps



AGC90
Fixed Panel Clamp



AGC180
Glass to Glass

Glass Brackets



GB55WS
Wall Bracket



GB55G
90° Glass to Glass



GBR55WS
Wall Bracket



GBR55G
90° Glass to Glass

Available Finishes



CH (Polished Chrome) **BN** (Brushed Nickel) **ORB** (Oil Rubbed Bronze) **PN** (Polished Nickel) **MBL** (Matte Black) **SB** (Satin Brass) **BBRZ** (Brushed Bronze) **BR** (Polished Brass)

*XX=FINISH



Add: 11220 Grader st #130 Dallas Tx 75238
Tel: +1 (470) 461 7492 / +86 138 2234 0936 **Whatsapp:** +86 138 2234 0936
Email: info@sg-storeline.com <https://www.sg-storeline.com/>



Add: 11220 Grader st #130 Dallas Tx 75238
Tel: +1 (470) 461 7492 / +86 138 2234 0936 **Whatsapp:** +86 138 2234 0936
Email: info@sg-storeline.com <https://www.sg-storeline.com/>

Shower No-Drill Clamps



SAC90L
Left Hand
Wall Mount Clamp



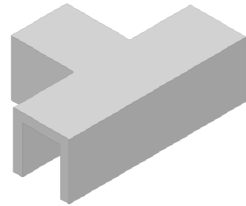
SAC90R
Right Hand
Wall Mount Clamp



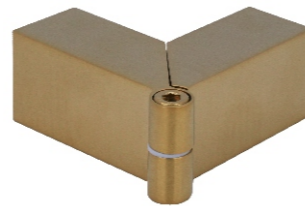
SAC90
90° Clamp



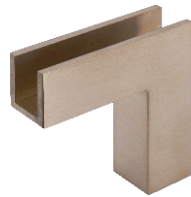
SAC135
135° Clamp



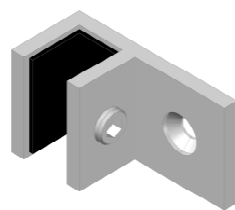
SAC90T
90° Clamp
(T Junction)



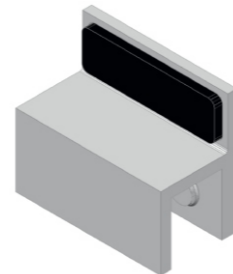
SAC91
90° to 180° Clamp



SAC90
90° Glass to Glass



SAC01
Ceiling Mount Clamp



DS3541
SG Square Style
Frameless Shower
Door Stop

Available Finishes



CH (Polished Chrome) **BN** (Brushed Nickel) **ORB** (Oil Rubbed Bronze) **PN** (Polished Nickel) **MBL** (Matte Black) **SB** (Satin Brass) **BBRZ** (Brushed Bronze) **BR** (Polished Brass)

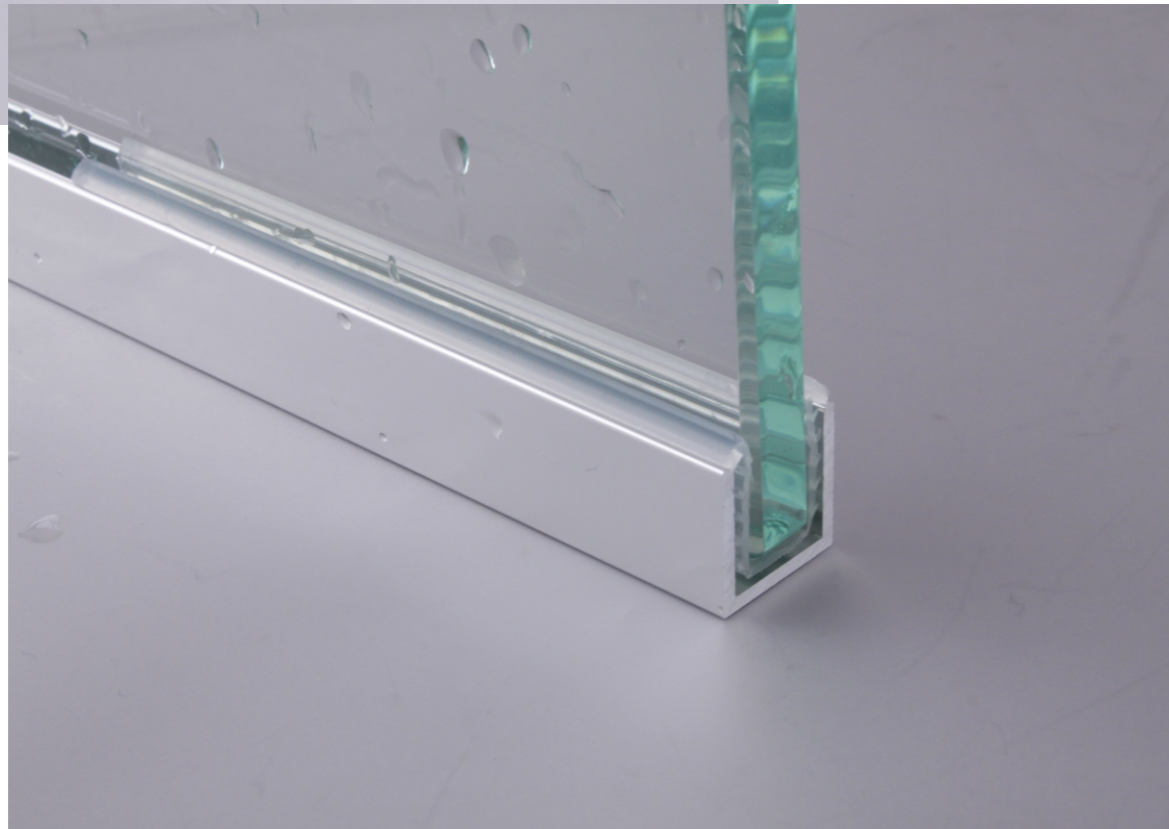
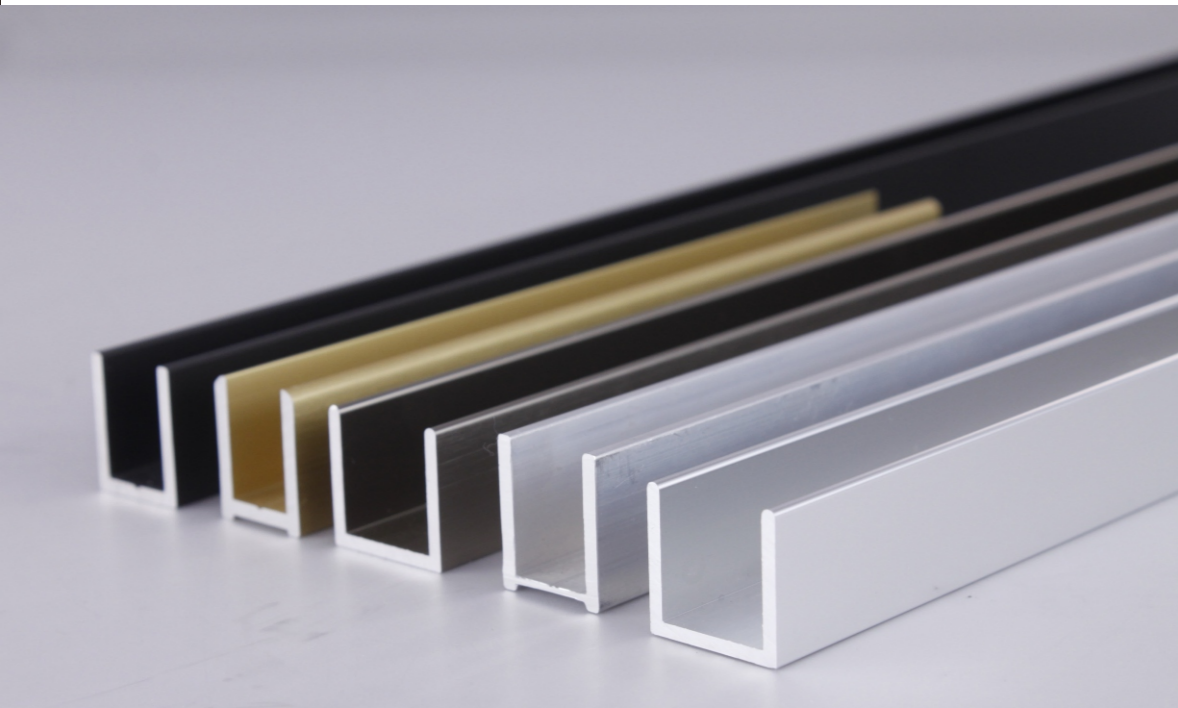
*XX=FINISH



Add: 11220 Grader st #130 Dallas Tx 75238
Tel: +1 (470) 461 7492 / +86 138 2234 0936 **Whatsapp:** +86 138 2234 0936
Email: info@sg-storeline.com <https://www.sg-storeline.com/>



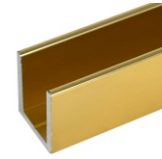
U-Channels



Available Finishes



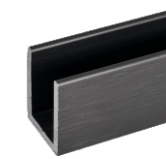
U-Channels



SUC1620
1/2" Fixed Panel Shower Door
Deep U-Channel - 95"



SUC1620
1/2" Fixed Panel Shower Door
Deep U-Channel - 144"



SUC1419
Fixed Panel Shower Door
Deep U-Channel - 95"



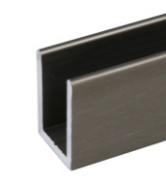
SUC1419
Frameless Shower Door
Aluminum Deep U-Channel
for 3/8" Thick Glass - 144"



SUC2525
Wet Glaze 1" Deep U-Channel
120" Stock Length



SUC2551
Wet Glaze 2" Deep U-Channel
120" Stock Length



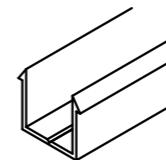
SUC2538
Wet Glaze 1-1/2" Deep U-Channel
120" Stock Length



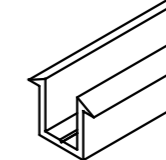
SUC201
72" Snap-In Filler Insert
for Shower Door Header



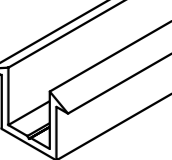
SUC1722
Standard Aluminum J-Channe



SUCF1214
36" Snap-in-Filler Insert for
Adjust Header Kit



SUCF1414
95"(2.41m) Stock Length
for 3/8"(10mm) glass



SUCF1614
95"(2.41m) Stock Length
for 1/2"(12mm) glass

U-Channels End Caps



ECA1419
End Cap for 3/8"
Deep U-Channel



ECA1620
End Cap for 1/2"
Deep U-Channe



EC1419
EC1620
EC2551
EC2538

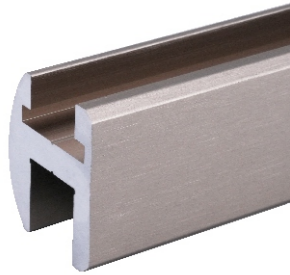
*XX=FINISH



Headers

The Shower Header Kit provides additional support and a level of safety while securing glass panels not reaching the ceiling. Header Kits are designed to allow installers to do in-house fabrication using a selection of component parts. Sold in 66", 98" or 144" (1.67, 2.49 or 3.65 m) lengths, each header extrusion has a narrow 1-1/4" (32mm) face to minimize the visible sight line. 90°, 135° or adjustable corners are sold separately for angled installations. HC2 Brass Wall Brackets are included in each kit.

Shower Door Header Kits



SDHR660
SDHR980
SDHR144



SDHF660
SDHF980
SDHF144

Shower Door Header Kits



SUC201



PSP1410
PSP148



HC90



HC135



AHC360



HC4



HC2



HT7A

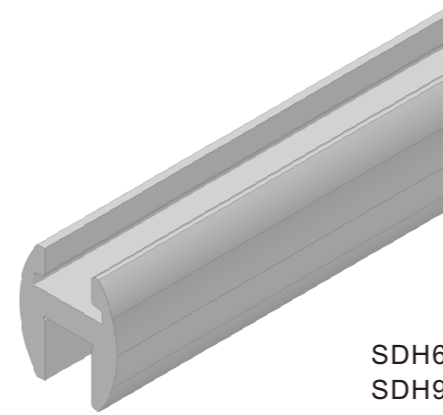


HT7

Adjust Shower Door Headers

The Shower Header Kit provides additional support and a level of safety while securing glass panels not reaching the ceiling. Header Kits are designed to allow installers to do in-house fabrication using a selection of component parts. Sold in 66", 98" or 144" (1.67, 2.49 or 3.65 m) lengths, each header extrusion has a narrow 1-1/4" (32mm) face to minimize the visible sight line. 90°, 135° or adjustable corners are sold separately for angled installations. HC2 Brass Wall Brackets are included in each kit.

Adjust Shower Door Header Kits

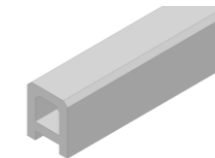


SDH660
SDH980
SDH144

Shower Door Header Kits



DT003A



SUC1
95"(2.41m) Stock Length
for 3/8"(10mm) glass



DT2006



DTR126



DT1010

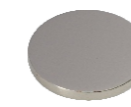


HC2

Available Finishes



CH
(Polished Chrome)



BN
(Brushed Nickel)



PN
(Polished Nickel)



MBL
(Matte Black)



SB
(Satin Brass)



BR
(Polished Brass)

*XX=FINISH

*XX=FINISH



Add: 11220 Grader st #130 Dallas Tx 75238
Tel: +1 (470) 461 7492 / +86 138 2234 0936 Whatsapp: +86 138 2234 0936
Email: info@sg-storeline.com <https://www.sg-storeline.com/>

Add: 11220 Grader st #130 Dallas Tx 75238
Tel: +1 (470) 461 7492 / +86 138 2234 0936 Whatsapp: +86 138 2234 0936
Email: info@sg-storeline.com <https://www.sg-storeline.com/>





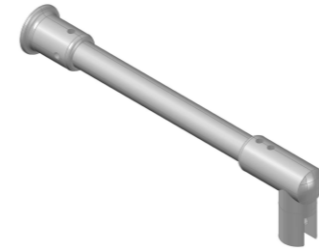
Support Bars



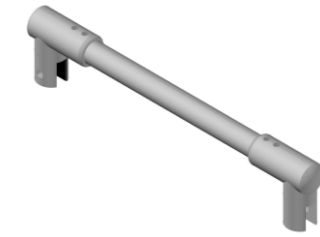
Support Bars

Fixed Panel Support Bars stabilize fixed panels of tempered glass in enclosures that do not go all the way up to the ceiling. Nylon-tipped set screws secure the glass and prevent glass-to-metal contact.

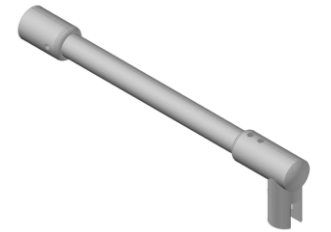
Fixed Panel Support Bars



Cat. No. SB06
Fixed Panel Wall-To-Glass Support Bar
for 1/4" to 5/16" (6 to 8 mm) Glass



Cat. No. SB26
Fixed Panel Glass-To-Glass Support Bar
for 1/4" to 5/16" (6 to 8 mm) Glass

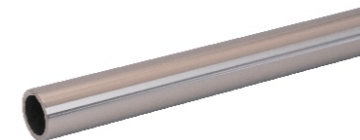


Cat. No. SB07
Fixed Panel Wall-To-Glass Support Bar
for 1/4" to 5/16" (6 to 8 mm) Glass

Cat. No. SB10
Fixed Panel Wall-To-Glass Support Bar
for 3/8" to 1/2" (10 to 12 mm) Glass

Cat. No. SB20
Fixed Panel Glass-To-Glass Support Bar
for 3/8" to 1/2" (10 to 12 mm) Glass

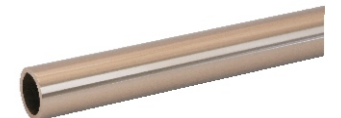
Support Bar Accessories and Replacement Parts



Cat. No. B1000
Support Bar Only
39" (1 m) Bar



Cat. No. B1300
Support Bar Only
51" (1.3 m) Bar



Cat. No. B2030
Support Bar Only
80" (2.03 m) Bar

Adjustable U-Bracket



Cat. No. B4
For 1/4" and 5/16"
(6 and 8 mm) Glass



Cat. No. B5
For 3/8" and 1/2"
(10 and 12 mm) Glass

Wall/Ceiling Bracket



Cat. No. B3
Wall Mount Support
Bar Bracket



Cat. No. B12
Slim Line Wall Mount
Fitting

*XX=FINISH





Support Bars

The Square Support Bar complements many square corner style hinges. The bar stabilizes fixed panels of glass in enclosures that do not go to the ceiling. After ordering the bar itself, choose from a number of various fittings to complete the desired application. The fittings come with nylon-tipped set screws that secure the glass and prevent metal-to-metal contact. Finishes are available to match many popular decors. No holes or cut-outs are required in the glass.

Support Bars Accessories and Replacement Parts



Cat. No. SQ1000
39" (1 m)
Square Bar Only



Cat. No. SQ1500
59-1/16" (1.5 m)
Square Bar Only



Cat. No. SQ418
Swiveling U-Bracket
for 1/4" or 5/16"
(6 or 8 mm) Glass



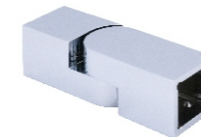
Cat. No. SQ4212
Swiveling U-Bracket
for 3/8" or 1/2"
(10 or 12 mm) Glass



Cat. No. SQ438
Movable Bracket
for 1/4" or 5/16"
(6 or 8 mm) Glass



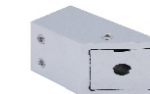
Cat. No. SQ4412
Movable Bracket
for 3/8" or 1/2"
(10 or 12 mm) Glass



Cat. No. SQ45G
Adjustable
Corner Bracket



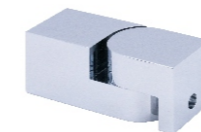
Cat. No. SQ46W
Wall Mount Bracket



Cat. No. SQ47W
45° Mitered
Wall Mount Bracket



Cat. No. SQ48W
22.5° Mitered
Wall Mount Bracket



Cat. No. SQ49W
Adjustable
Wall Mount Bracket



Cat. No. SQ50T
"T" Junction Bracket



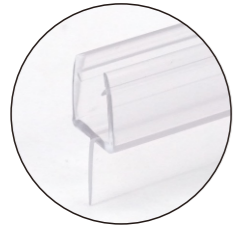
Cat. No. SQ910G
Square Cornered Support
Bar Bracket for 3/8" to 1/2"
(10 to 12 mm) Glass



Cat. No. SQ9G
Square Cornered Support
Bar Bracket for 1/4" to 5/16"
(6 to 8 mm) Glass

*XX=FINISH

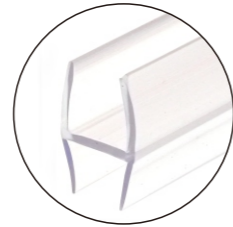
Water Seals and Sweeps



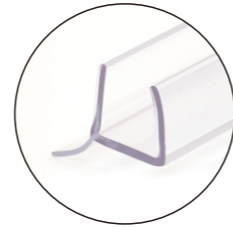
PSP10FA10 3/8"(10MM)
PSP10FA12 1/2"(12MM)



PSP102F6 1/4"(6MM)
PSP102F8 5/16"(8MM)
PSP102F10 3/8"(10MM)
PSP102F12 1/2"(12MM)



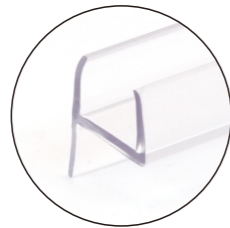
PSP131910 3/8"(10MM)



PSP101356 1/4"(6MM)
PSP101358 5/16"(8MM)
PSP1013510 3/8"(10MM)
PSP1013512 1/2"(12MM)



PSPH1010 3/8"(10MM)



PSP100F6 1/4"(6MM)
PSP100F8 5/16"(8MM)
PSP100F10 3/8"(10MM)
PSP100F12 1/2"(12MM)



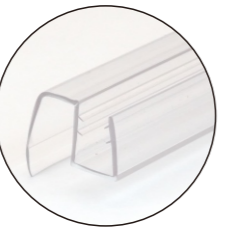
PSPCC8 5/16"(8MM)
PSPCC10 3/8"(10MM)
PSPCC12 1/2"(12MM)



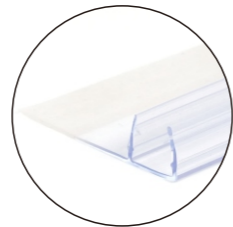
PSP75
sold in increments of 100



PSP16218 5/16"(8MM)
PSP162110 3/8"(10MM)
PSP162112 1/2"(12MM)



PSP312710 3/8"(10MM)
PSP312712 1/2"(12MM)



PSP421310 3/8"(10MM)



PSP0805 1/4"(6MM)
PSPA0805
1/4"(6MM) with Tape

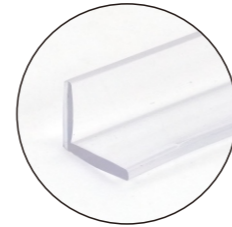
Available Finishes



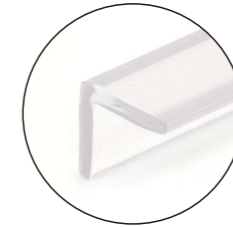
CH (Polished Chrome) **BN** (Brushed Nickel) **ORB** (Oil Rubbed Bronze) **PN** (Polished Nickel) **MBL** (Matte Black) **SB** (Satin Brass) **BBRZ** (Brushed Bronze) **BR** (Polished Brass)

*XX=FINISH

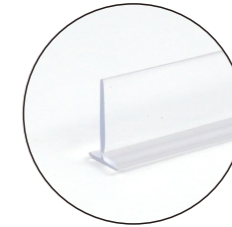
Water Seals and Sweeps



PSP08108 5/16"(8MM)
PSPA08108
5/16"(8MM) with Tape



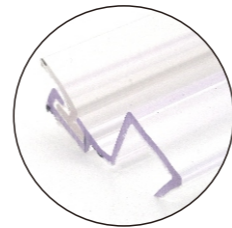
PSP10B
1/4"(6MM) to 1/2"(12MM)
PSPA10B
1/2"(12MM) with Tape



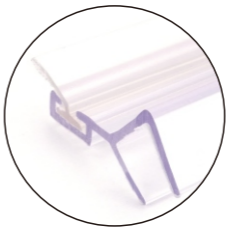
PSP081311 7/16"(11MM)
PSPA081311
7/16"(11MM) with tape



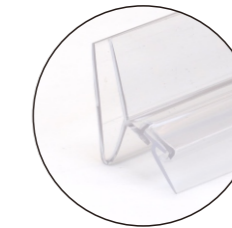
PSP07078 5/16"(8MM)
PSPA07078
5/16"(8MM) with Tape



PSP281610 3/8"(10MM)



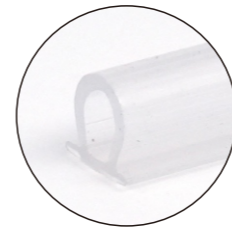
PSP31168 5/16"(8MM)
PSP311610 3/8"(10MM)



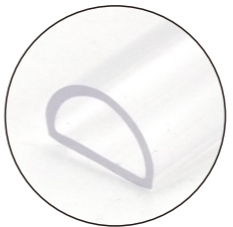
PSP31288 5/16"(8MM)
PSP312810 3/8"(10MM)



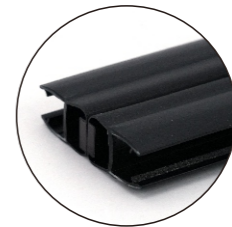
PSP301610 3/8"(10MM)
PSP301612 1/2"(12MM)



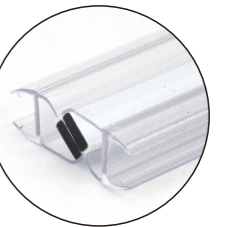
PSSDTJ 5/32"(4MM)
SPS0605 7/32"(5.6MM)
PSSDTJT2
5/32"(4MM) with Tape
PSPA0605
7/32"(5.6MM) with Tape



SPS3010 3/8"(10MM)
PSPA3010
3/8"(10MM) with tope



PSPM1808 5/16"(8MM)
PSPM18010 3/8"(10MM)



PSPM111808 5/16"(8MM)
PSPM1118010 3/8"(10MM)
PSPM1118012 1/2"(12MM)

*XX=FINISH



Add: 11220 Grader st #130 Dallas Tx 75238
Tel: +1 (470) 461 7492 / +86 138 2234 0936 **Whatsapp:** +86 138 2234 0936
Email: info@sg-storeline.com <https://www.sg-storeline.com/>

Add: 11220 Grader st #130 Dallas Tx 75238
Tel: +1 (470) 461 7492 / +86 138 2234 0936 **Whatsapp:** +86 138 2234 0936
Email: info@sg-storeline.com <https://www.sg-storeline.com/>



Standoff Railing Fittings



Glass Clamps & Accessories



CR55
316 RD Series Glass Clamp with Flat Base for 1/4" and 1/2" Glass



CS55
316 SQ Series Clamp With Flat Base For 1/4" and 1/2" Glass

Available Finishes

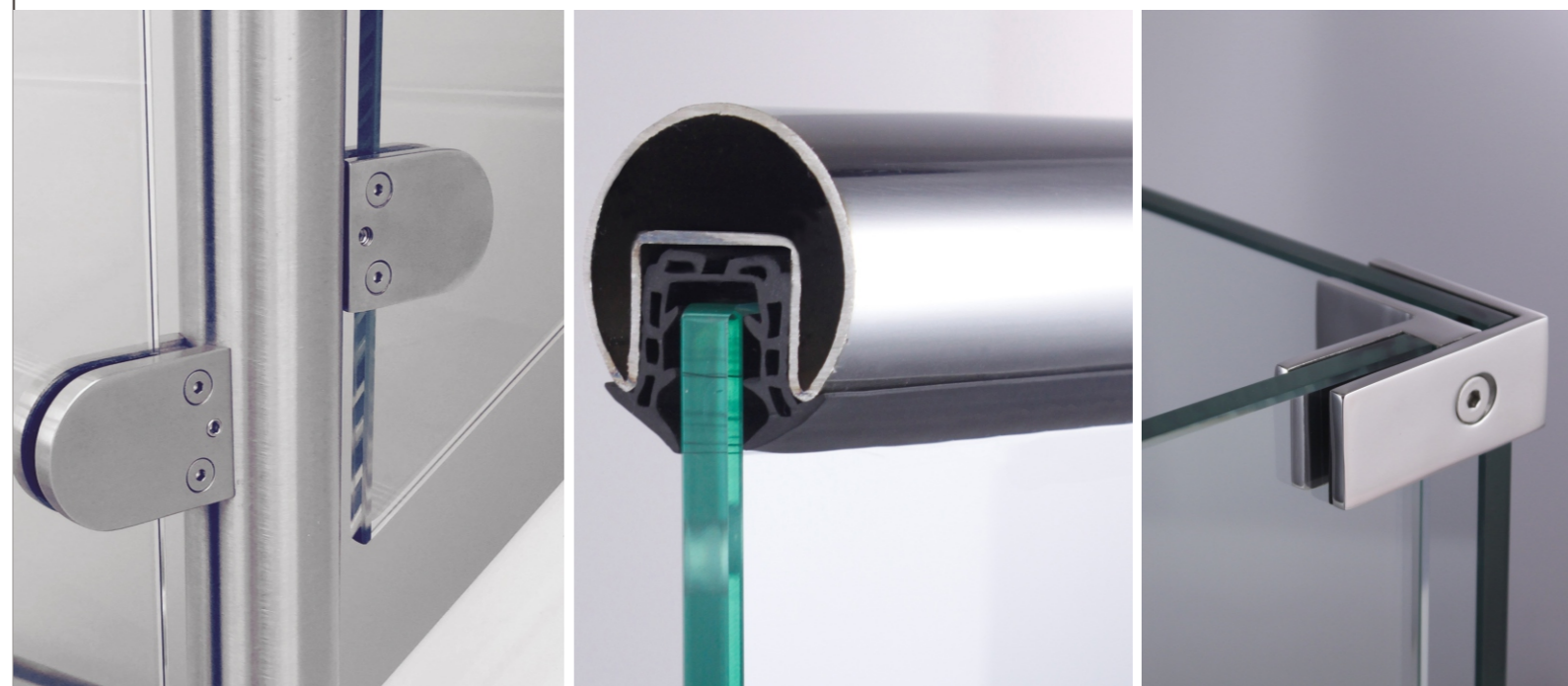


SRFD5044
316 Standard 2" Glass Rail Standoff Fitting with Mounting Plate



SRF5044
316 Glass Rail Standoff Base and Cap - 1-3/4" Projection

Available Finishes



*XX=FINISH

*XX=FINISH



Add: 11220 Grader st #130 Dallas Tx 75238
Tel: +1 (470) 461 7492 / +86 138 2234 0936 Whatsapp: +86 138 2234 0936
Email: info@sg-storeline.com <https://www.sg-storeline.com/>

Add: 11220 Grader st #130 Dallas Tx 75238
Tel: +1 (470) 461 7492 / +86 138 2234 0936 Whatsapp: +86 138 2234 0936
Email: info@sg-storeline.com <https://www.sg-storeline.com/>



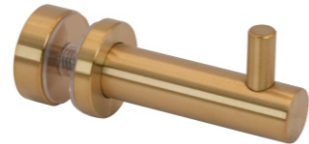
Robe Hooks



AR7136
Sleeve-Over Robe Hook



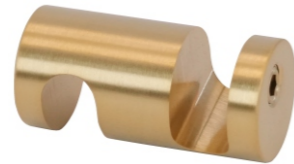
AR5035
Robe Hook



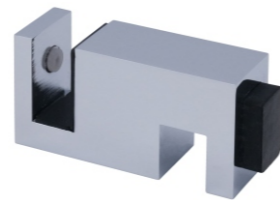
AR104P
Peg Robe/Towel Hook
for 3/8" and 1/2" Glass



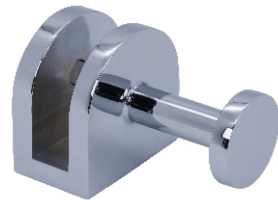
AR104
Robe/Towel Hook for
3/8" and 1/2" Glass



AR2450
Cylinder Robe/Towel Hook
for 5/16" and 3/8" Glass



SGSCRH1
Cylinder Robe/Towel Hook
for 5/16" and 3/8" Glass



AR6039
Mushroom Robe/Towel Hook
for 5/16" and 3/8" Glass



AR4530
Single Robe/Towel Hook
for 5/16" and 3/8" Glass



AR9030
Double Robe/Towel Hook
for 5/16" and 3/8" Glass

Available Finishes



CH (Polished Chrome) **BN** (Brushed Nickel) **ORB** (Oil Rubbed Bronze) **PN** (Polished Nickel) **MBL** (Matte Black) **SB** (Satin Brass) **BBRZ** (Brushed Bronze) **BR** (Polished Brass)

*XX=FINISH



Glass Mount Towel/Robe Hook

- For 5/16" to 1/2" Tempered Glass
- Smooth Round Profile Design
- Hanger Bolt Included For Wall Mount Installation
- Requires One 1/2" Diameter Hole For Installation
- Seven Popular Finishes Available

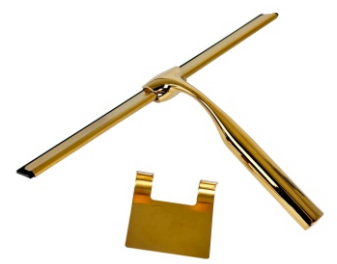
Squeegee



SS01CH
Deluxe Shower Squeegee



SS01MB
Deluxe Shower Squeegee



SS01PG
Deluxe Shower Squeegee

*XX=FINISH



Add: 11220 Grader st #130 Dallas Tx 75238
Tel: +1 (470) 461 7492 / +86 138 2234 0936 **Whatsapp:** +86 138 2234 0936
Email: info@sg-storeline.com <https://www.sg-storeline.com/>



Add: 11220 Grader st #130 Dallas Tx 75238
Tel: +1 (470) 461 7492 / +86 138 2234 0936 **Whatsapp:** +86 138 2234 0936
Email: info@sg-storeline.com <https://www.sg-storeline.com/>

Handrail Brackets



HB208A**XX**



HBR201GS**XX**



HB101A**XX**



HB9595**XX**



HBR6876RA**XX**



HBR6876RW**XX**



GCA101R**XX**



GCB101R**XX**

Designed for segment applications. Each swivel fitting is adjustable up to 8 degrees

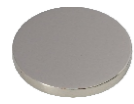


GCC101R**XX**

Available Finishes



CH
(Polished Chrome)



BN
(Brushed Nickel)



ORB
(Oil Rubbed Bronze)



PN
(Polished Nickel)



MBL
(Matte Black)



SB
(Satin Brass)



BBRZ
(Brushed Bronze)



BR
(Polished Brass)

***XX=FINISH**

Mini Posts (Spigots)



MPR5050**XX**



MPS5050**XX**



MPC22A**XX**



MPC22**XX**



***XX=FINISH**



Add: 11220 Grader st #130 Dallas Tx 75238
Tel: +1 (470) 461 7492 / +86 138 2234 0936
Email: info@sg-storeline.com

Whatsapp: +86 138 2234 0936
<https://www.sg-storeline.com/>



Add: 11220 Grader st #130 Dallas Tx 75238
Tel: +1 (470) 461 7492 / +86 138 2234 0936
Email: info@sg-storeline.com

Whatsapp: +86 138 2234 0936
<https://www.sg-storeline.com/>

Shower Door Latch



SDLDWXX



SDLDGXX



SDL720GXX



SDL720WAXX



Available Finishes



***XX=FINISH**



Add: 11220 Grader st #130 Dallas Tx 75238
 Tel: +1 (470) 461 7492 / +86 138 2234 0936 Whatsapp: +86 138 2234 0936
 Email: info@sg-storeline.com <https://www.sg-storeline.com/>



Glass Handle Lock



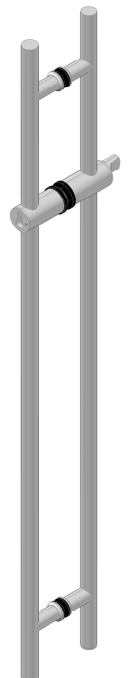
GHLR102AXX



GHLR104AXX



GHLR103AXX



GHLR109XX

***XX=FINISH**



Add: 11220 Grader st #130 Dallas Tx 75238
 Tel: +1 (470) 461 7492 / +86 138 2234 0936 Whatsapp: +86 138 2234 0936
 Email: info@sg-storeline.com <https://www.sg-storeline.com/>



Display Cases



Glue

LOCTITE glue is a Medium Strength Adhesive for locking and sealing of threaded fasteners which require normal disassembly with standard hand tools. The product cures when confined in the absence of air between close fitting metal surfaces and prevents loosening and leakage from shock and vibration. The thixotropic nature of LOCTITE glue, reduces the migration of liquid product after application to the substrate. Provides robust curing performance. It not only works on active metals (e.g. brass, copper) but also on passive substrates such as stainless steel and plated surfaces. The product offers high temperature performance and oil tolerance. It tolerates minor surface contaminations from various oils, such as cutting, lubrication, anti-corrosion and protection fluids.



LOCTITE glue is a general purpose threadlocker of medium bond strength. This threadlocker secures and seal bolts, nuts and studs to prevent loosening due to vibration. The product works on all metals, including passive substrates such as stainless steel, aluminium and plated surfaces. It is proven to be tolerant of minor contamination due to industrial oils, e.g. engine oils, corrosion prevention oils and cutting fluids.

Clean Up Method Remove all sources of ignition. Evacuate and ventilate spill area; dike spill to prevent entry into water system; wear full protective equipment during cleanup. Soak up with inert absorbent material (e.g. sand, silica gel, acid binder, universal binder, sawdust). Store in a partly filled, closed container until disposal.

Photo Gally

