

SPECIFICATIONS

All Holes Are 1/2" (12mm) Diameter
All Measurements Are Center-To-Center
Appropriate Clear Gaskets Included
Fits 1/4" (6mm) to 1/2" (12mm) Glass



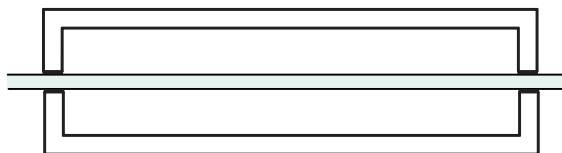
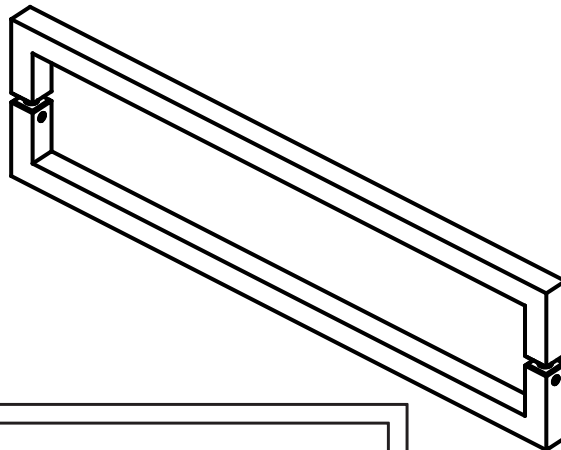
Pull Handles

Code NO. **PHRNW6x6 / PHRNW8x8 / PHRNW12x12 / PHRNW18x18 /
PHRNW20x20 / PHRNW24x24 / PHRNW28x28 / PHRNW30x30**

Contact information: +1 (470) 461 7492 / +86 138 2234 0936

Email: info@sg-storeline.com **www.sg-storeline.com**





SPECIFICATIONS

All Holes Are 1/2" (12mm) Diameter
All Measurements Are Center-To-Center
Appropriate Clear Gaskets Included
Fits 1/4" (6mm) to 1/2" (12mm) Glass



Pull Handles

Code NO. **PHS6x6 / PHS8x8 / PHS12x12 / PHS18x18 / PHS20x20 / PHS24x24 / PHS28x28 / PHS30x30**

Contact information: +1 (470) 461 7492 / +86 138 2234 0936

Email: info@sg-storeline.com **www.sg-storeline.com**

