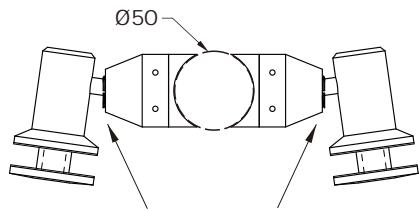


| MODEL | Glass thickness | Glass type | Max. glass weight |
|---------|-----------------|------------|-------------------|
| GCA101R | 12mm glass | Tempered | 40kg |

Finishes = Brushed stainless steel

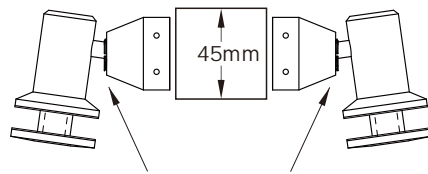
Installation Instructions

Option 1: Round post mount

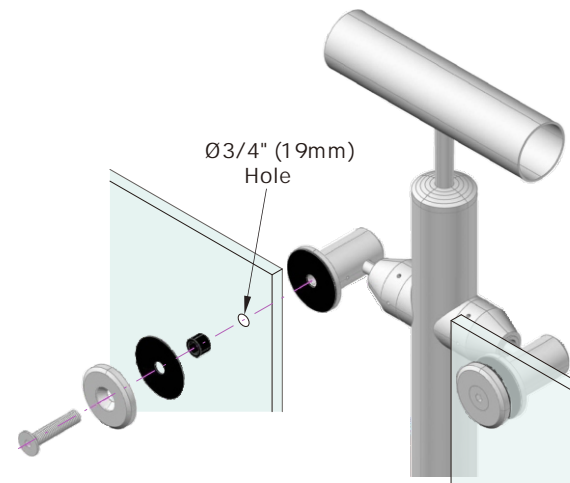
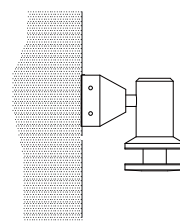


Designed for segment applications. Each swivel fitting is adjustable up to 8 degrees.

Option 2: Square or rectangular post mount



Option 3: Wall Mount

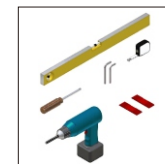


Step 1. Install the double arm connector onto the post or wall.

*For round posts or flat posts with a width of 50mm or less, thread the M10× 70mm screw through the post and install the connectors on either ends of the screw.

*For wider posts or wall mounting, use one M10× 50mm screw for each side.

Step 2. Align the 19mm diameter hole on the glass with the glass connector and install as shown.



Tools required for installation:

Spirit Level
Measuring tape
Power drill
8 -10 mm drill bit for installation stone

Please see safety instructions on power drill before starting assembly

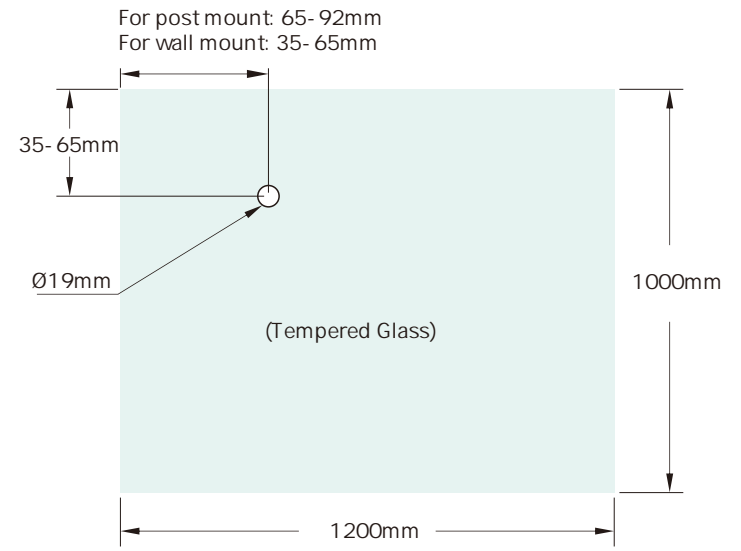
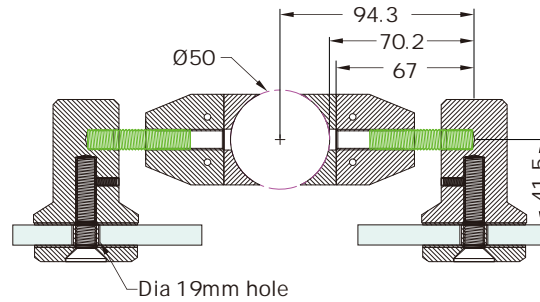
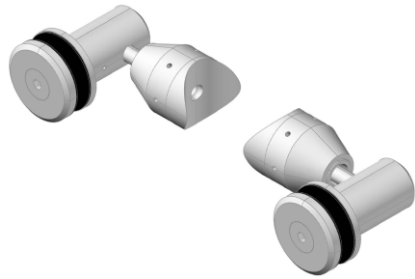
Swivel double arm glass connector
Code NO. **GCA101R**

Contact information: +1 (470) 461 7492 / +86 138 2234 0936

Email: info@sg-storeline.com

www.sg-storeline.com



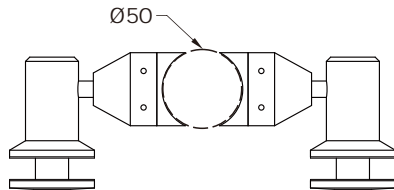


| MODEL | Glass thickness | Glass type | Max. glass weight |
|---------|-----------------|------------|-------------------|
| GCB101R | 12mm glass | Tempered | 40kg |

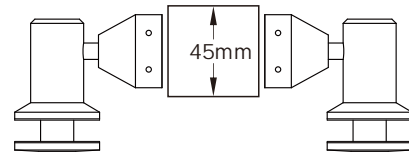
Finishes = Brushed stainless steel

Installation Instructions

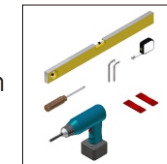
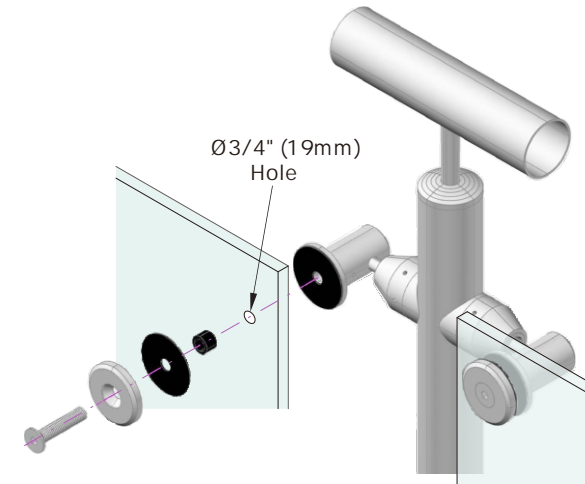
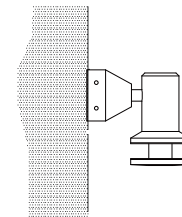
Option 1: Round post mount



Option 2: Square or rectangular post mount



Option 3: Wall Mount



Tools required for installation:

Spirit Level
Measuring tape
Power drill
8 - 10 mm drill bit for installation stone
Philips screwdriver
Plastic wedges

Please see safety instructions on power drill before starting assembly

Step 1. Install the double arm connector onto the post or wall.

*For round posts or flat posts with a width of 50mm or less, thread the M10× 70mm screw through the post and install the connectors on either ends of the screw.

*For wider posts or wall mounting, use one M10× 50mm screw for each side.

Step 2. Align the 19mm diameter hole on the glass with the glass connector and install as shown.

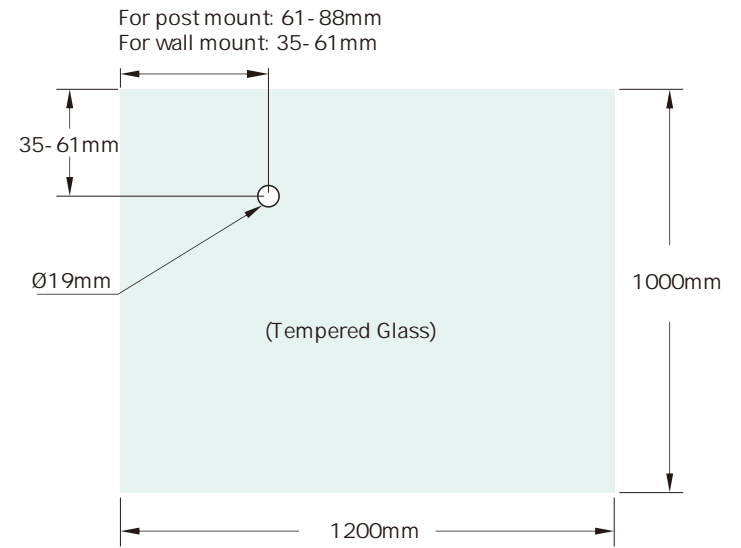
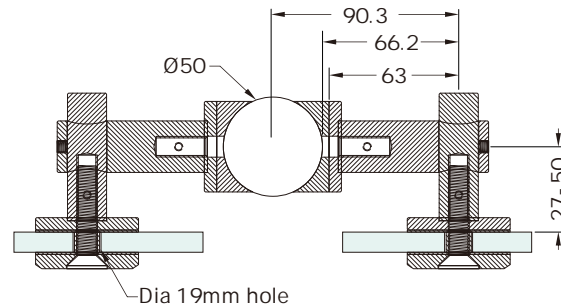
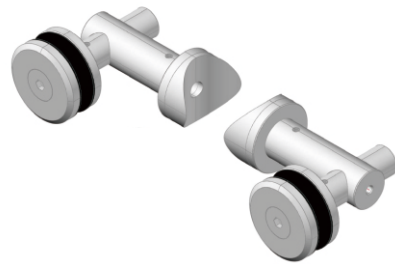
Fixed double arm glass connector
Code NO. **GCB101R**

Contact information: +1 (470) 461 7492 / +86 138 2234 0936

Email: info@sg-storeline.com

www.sg-storeline.com



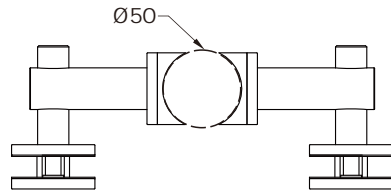


| MODEL | Glass thickness | Glass type | Max. glass weight |
|---------|-----------------|------------|-------------------|
| GCC101R | 12mm glass | Tempered | 40kg |

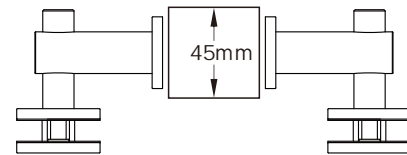
Finishes = Brushed stainless steel

Installation Instructions

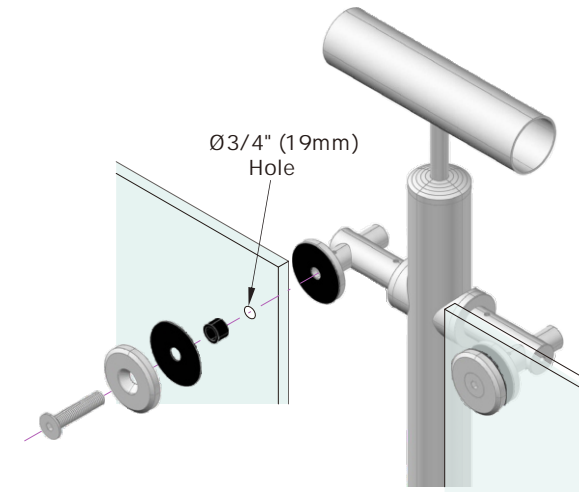
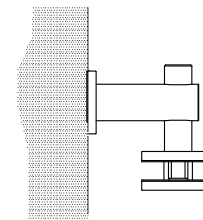
Option 1: Round post mount



Option 2: Square or rectangular post mount



Option 3: Wall Mount



Tools required for installation:

Spirit Level
Measuring tape
Power drill
8 -10 mm drill bit for installation on stone

Please see safety instructions on power drill before starting assembly

Step 1. Install the double arm connector onto the post or wall using one M10× 50mm screw for each side.

Step 2. Align the 19mm diameter hole on the glass with the glass connector and install as shown.

